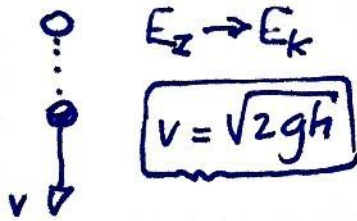


* Wvbe E: $\sum E_{\text{voor}} = \sum E_{\text{na}}$

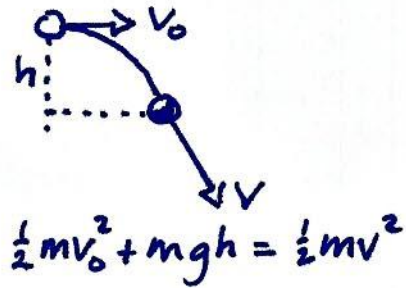
zwaarteenergie $E_z = mgh$

bewegingsenergie $E_k = \frac{1}{2}mv^2$

v.o. vrije val



v.o. gooi

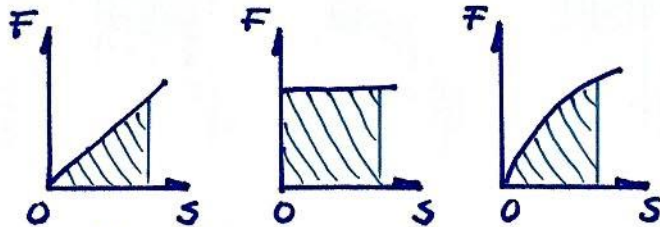


* Arbeid W verandert Ek

met $W = F \cdot s$
 $J = N \cdot m$

$E_{k1} + \sum W = E_{k2}$

* Bepaling W
 via oppervlak:



v.o. veer
 $F = c \cdot u \rightarrow E = \frac{1}{2}cu^2$

* Vermogen P

$P = \frac{W}{t}$

$P = F \cdot v$

$1W = 1J/s$

rendement η

$\eta = \frac{P_{\text{nuttig}}}{P_{\text{in}}}$